



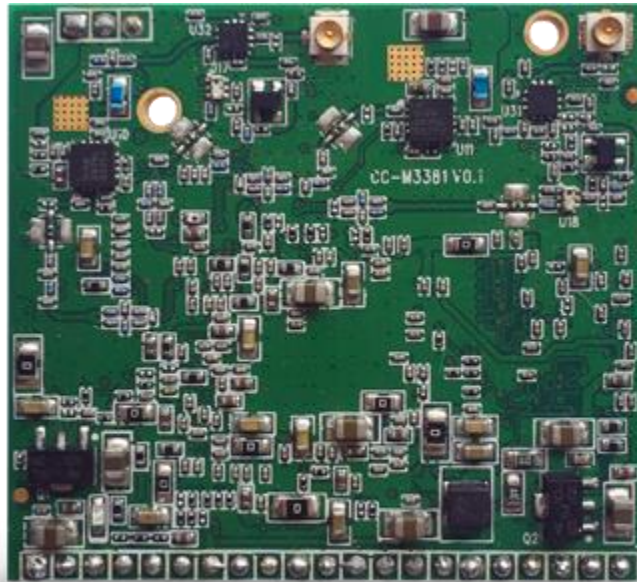
CC-M3381

2x2 2.4GHz 802.11b/g/n

2x2 5GHz 802.11a/n

Dual-band Module

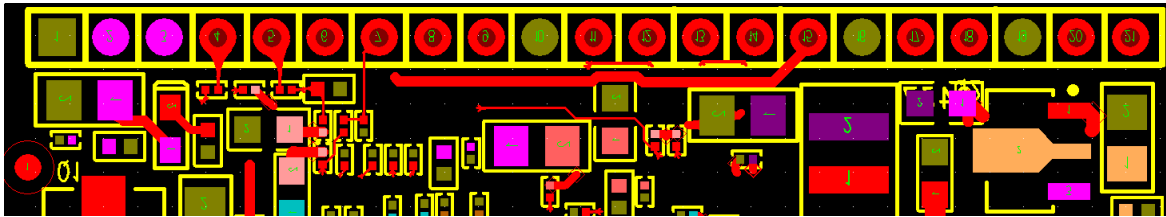
Product Feature



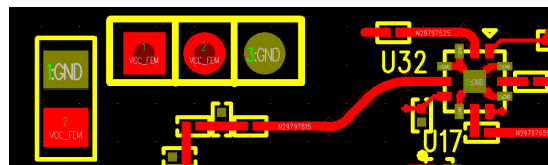
- Support 802.11n.
- High performance 5GHz or 2.4GHz 2x2 MIMO wireless module.
- Max transmission throughput: 300Mbps.
- Provide users with a standard wired network signal interface that supports TCP/IP.
- Can be used to develop wireless video related products.

Signal Definition Constraint

J1



J2



Serial Number	Name	Functional Description
J1		
1	GND	Ground.
2	3.3V	3.3V power input
3	3.3V	3.3V power input
4	LAN0	Output, local network status indication signal
5	RST	Module reset, low effective
6	WLAN	Output, wireless network status indication signal
7	GPIO16/default	Input, restore the factory default value of the module, low level is valid for a certain time
8	GPIO21	Reserved
9	GPIO4	Reserved
10	GND	Ground.
11	PHY_TX+	Local network port TX+
12	PHY_TX-	Local network port TX-
13	PHY_RX+	Local network port RX+
14	PHY_RX-	Local network port RX-
15	PHY_2.0V	2.0V output, connected to the central tap of the network transformer
16	GND	Ground.
17	TXD	UART signal output
18	RXD	UART signal input
19	GND	Ground.
20	USB_DP	USB bus D+
21	USB_DM	USB bus D-
J2		
1	VDD_PA	RF part power supply, 3.3V or 5V
2	VDD_PA	RF part power supply, 3.3V or 5V
3	GND	Ground.

Specifications

Chip

Item	Mode
CPU	AR9344
Baseband	AR9344
DRAM	32M
Physical Interface	Standard 2.0mm pin header
Rated Voltage	Baseband: 3.3V \pm 0.2V RF section: 3.3 or 5V
Maximum Power	3.3V: 20dBm 5V: 24dBm

Power

2.4G/5V

802.11b(Mbps)		Power(dBm)
1		24
11		24
802.11g(Mbps)		Power(dBm)
6		24
54		21
802.11n(Mbps)		Power(dBm)
MCS0		24
MCS7		20

5G/5V

802.11a(Mbps)		Power(dBm)
6		21
54		18
802.11n(Mbps)		Power(dBm)
MCS0		21
MCS7		17

2.4G/3.3V

802.11b(Mbps)		Power(dBm)
1		21
11		21
802.11g(Mbps)		Power(dBm)
6		21
54		18

802.11n(Mbps)		Power(dBm)
MCS0		21
MCS7		17

5G/3.3V

802.11a(Mbps)		Power(dBm)
6		20
54		17
802.11n(Mbps)		Power(dBm)
MCS0		20
MCS7		16

EVM

802.11b(Mbps)		EVM(dB)
1/2/5.5/11		EVM≤0.35

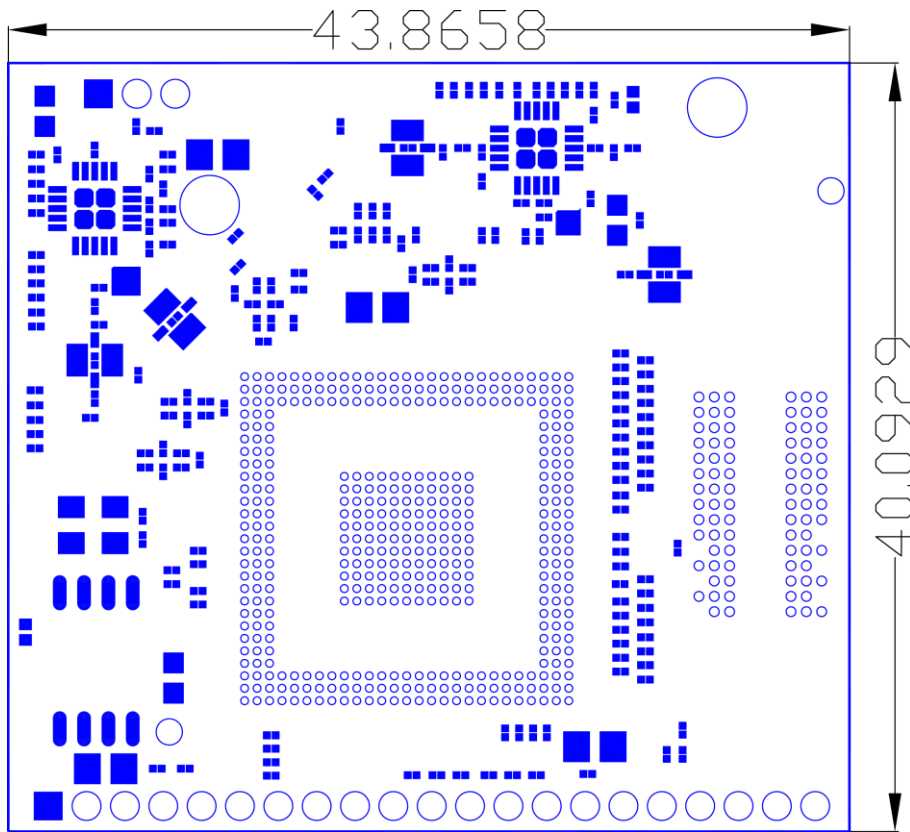
802.11a/g(Mbps)		EVM(dB)
6		-5
54		-25

802.11n(MCS)		EVM(dB)
0/8		-5
7/15		-27

Sensitivity

Data Rate	Sensitivity (100mw)
802.11b(Mbps)	
11	-87
1	-93
802.11a/g(Mbps)	
6	-85
54	-72
802.11n HT20(MCS)	
0/8	-85
7/15	-67
802.11n HT40(MCS)	
0/8	-82
7/15	-64

Mechanical Information



Contact Us

Creatcomm Technologies Co. Ltd.
Room 311, Y1 Building, No. 112, Liangxiu Road, Pudong Software Park, Shanghai, China
Tel: +86-021-58351681
Email: sales@creatcomm.com
Website: www.creatcomm.com