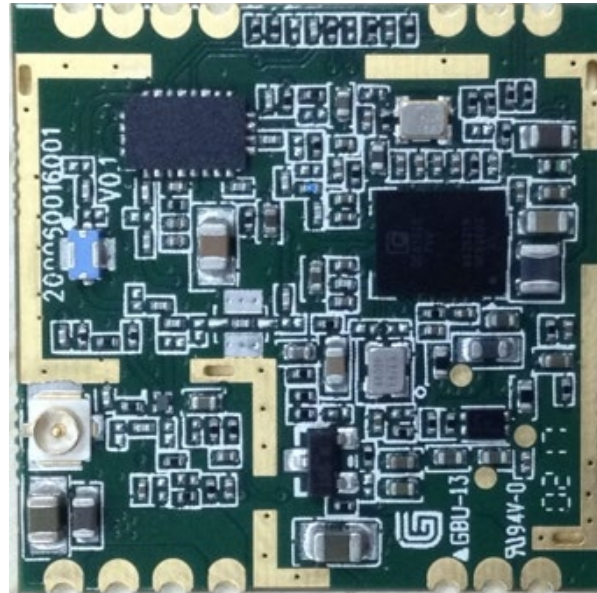


M0353

1x1 5GHz 802.11n/ac Module

Product Feature



- M0353 Supports low-power USB 2.0 interfaces.
- Provides a highly integrated WLAN system-on-chip (SoC) for 1x1 5 GHz 802.11n/ac WLAN applications.
- Supports a single-ended RF port for cleaner and lower cost design.
- Supports 20 MHz, 40 MHz and 80 MHz at 5 GHz.
- Supports multiuser MIMO.
- Operates on one 3.3-volt power supply and one 5.0-volt power supply.
- 48 MHz reference clock.
- Available in a low-profile 25.0 mm × 25.0 mm solder able package.
- Uses an external FEM to support high output power and rapid sensitivity.
- Radio Interface: 1*UFL.

Pin Description

Pin#	Pin Name	I/O	Description
1	3V3IN	Input	3.3V Power Supply/1.5A ^①
2	GND	GND	
3	GND	GND	
4	3V3IN	Input	3.3V Power Supply/1.5A ^①
5	5VIN	Input	5V Power Supply/1A ^②
6	5VIN	Input	5V Power Supply/1A ^②
7	GND	GND	
8	USB+	I/O	Universal Serial Bus Positive
9	USB-	I/O	Universal Serial Bus Negative
10	LED	Output	WLAN Enable
11	GND	GND	
12	GND	GND	
13	GND	GND	
14	GND	GND	

Remark:

① 3.3V/1.5A Power Supply in Pin1 & 4

② 5V/1A Power supply in Pin5 & 6

Electrical Characteristics

RF Output Power vs Data rate list as below:

	TX Power			Sensitivity		
	Date Rate	Avg. TX	Tolerance	Data Rate	Sensitivity	Tolerance
11b/g/n	1 Mbps	19dBm	+/- 2dBm	1 Mbps	-92dBm	+/- 2dBm
	11 Mbps	19dBm	+/- 2dBm	11 Mbps	-86dBm	+/- 2dBm
	6 Mbps	18dBm	+/- 2dBm	6 Mbps	-88dBm	+/- 2dBm
	54 Mbps	15dBm	+/- 2dBm	54 Mbps	-70dBm	+/- 2dBm
	HT20 MCS0	18dBm	+/- 2dBm	HT20 MCS0	-88dBm	+/- 2dBm
	HT20 MCS7	14dBm	+/- 2dBm	HT20 MCS7	-68dBm	+/- 2dBm
	HT40 MCS0	18dBm	+/- 2dBm	HT40 MCS0	-86dBm	+/- 2dBm
	HT40 MCS7	14dBm	+/- 2dBm	HT40 MCS7	-65dBm	+/- 2dBm
11a/n	6 Mbps	24dBm	+/- 2dBm	6 Mbps	-90dBm	+/- 2dBm
	54 Mbps	19dBm	+/- 2dBm	54 Mbps	-72dBm	+/- 2dBm

	HT20 MCS0	24dBm	+/- 2dBm	HT20 MCS0	-90dBm	+/- 2dBm
	HT20 MCS7	20dBm	+/- 2dBm	HT20 MCS7	-69dBm	+/- 2dBm
	HT40 MCS0	24dBm	+/- 2dBm	HT40 MCS0	-87dBm	+/- 2dBm
	HT40 MCS7	20dBm	+/- 2dBm	HT40 MCS7	-67dBm	+/- 2dBm
11ac	VHT20 MCS0	24dBm	+/- 2dBm	VHT20 MCS0	-90dBm	+/- 2dBm
	VHT20 MCS8	19dBm	+/- 2dBm	VHT20 MCS8	-66dBm	+/- 2dBm
	VHT40 MCS0	24dBm	+/- 2dBm	VHT40 MCS0	-87dBm	+/- 2dBm
	VHT40 MCS9	18dBm	+/- 2dBm	VHT40 MCS9	-63dBm	+/- 2dBm
	VHT80 MCS0	24dBm	+/- 2dBm	VHT80 MCS0	-84dBm	+/- 2dBm
	VHT80 MCS9	18dBm	+/- 2dBm	VHT80 MCS9	-59dBm	+/- 2dBm

Mechanical Information

